

# Torque Multiplier OPERATION MANUAL

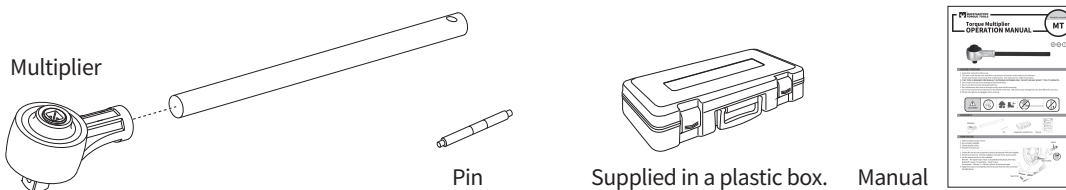


## BEFORE STARTING

1. Study this instruction before use.
2. This tool is with torque ratio and there is an amount of reaction to be made to the fasteners.  
Please keep hands or face away from extension bar. The reaction force might result injury.
3. **THIS TOOL IS DESIGNED FOR MANUAL TIGHTENING FASTENERS ONLY. DO NOT USE ANY IMPACT TOOL TO OPERATE.**
4. Do not over torquing the fastener, or it will cause tool's damage and serious injury.
5. Do not use this tool near rotating machinery.
6. Any adjustments will result of losing accuracy and void the warranty.
7. Do not use any format of extension on the handle of the tool. This will not only damage the tool, also affect the accuracy.
8. Please wear gloves and goggles when working.



## CONTENTS



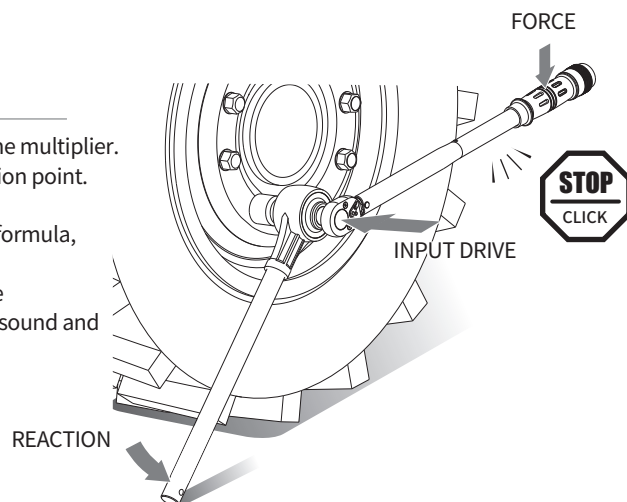
## HOW TO USE

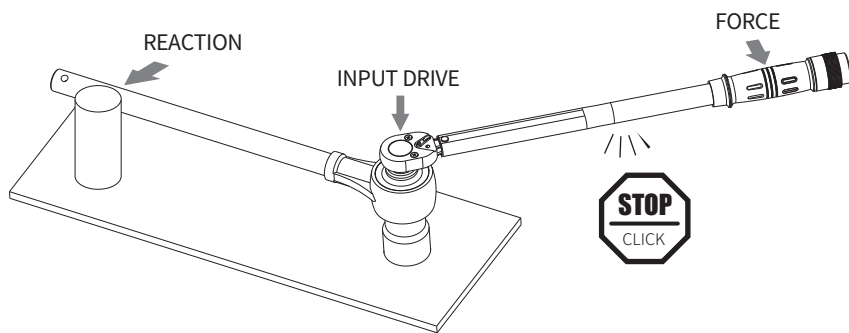
1. Select a quality torque wrench
2. Get a torque multiplier
3. Choose quality socket
4. Prepare extension bar

1. Choose the correct size of socket for bolt to be fastened with the multiplier.
2. Fix the extension bar with the multiplier and next to the reaction point.
3. Put the torque wrench on the multiplier.

Remark : The input torque value is calculated by the physical formula,  
 $\text{Required Torque} / \text{Torque Ratio} = \text{Input Torque}$   
 For example :  $480 \text{ Nm} / 3 = 160 \text{ Nm}$ , 160 Nm is the input torque

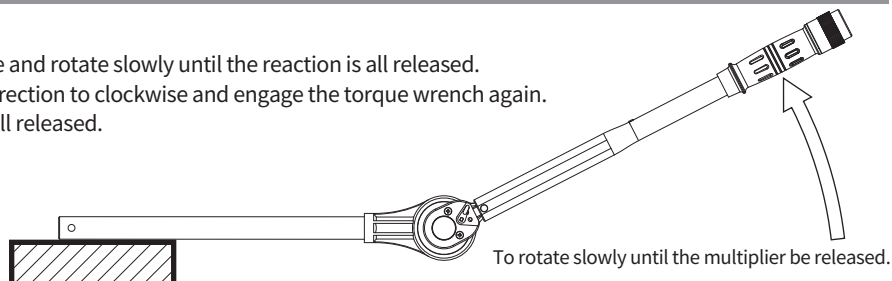
4. Apply the torque wrench gently and evenly until hear the click sound and feel light shock.



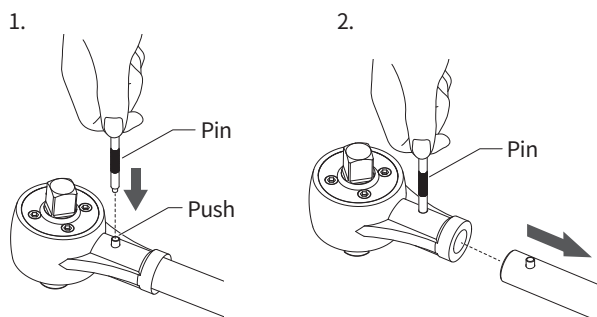


## FINISHING WORKING

1. Load the torque wrench.
2. Move the ratchet direction to anti-clockwise and rotate slowly until the reaction is all released.
3. If remove failed, please re-set the ratchet direction to clockwise and engage the torque wrench again.  
Then go back to step 2 until the reaction is all released.

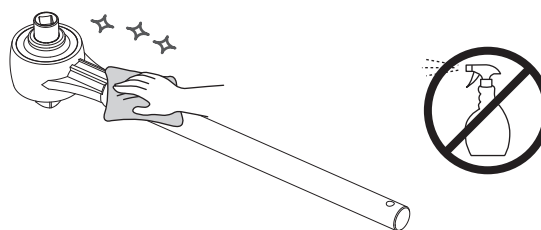


## TEAR DOWN

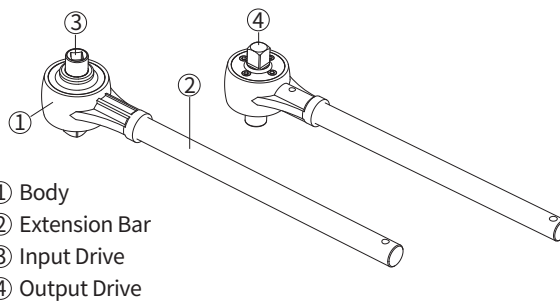
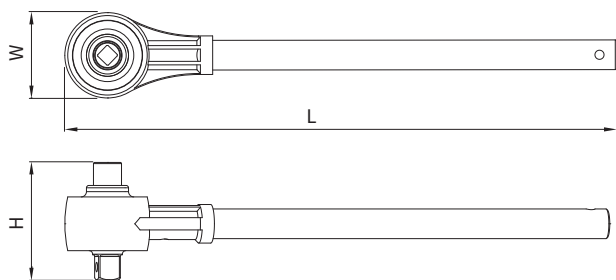


## MAINTENANCE

Clean this tool by wiping with a clean cloth after operation and storage in a dry environment. Do not dip any type of liquid in this tool. This may damage the internal of this tool.



## SPECIFICATION



ITEM NO.	Torque Ratio	Range ( max )				Input Square	Output Square	W	H	L	KG
		Input		Output							
MT-1000	1:3	500 Nm	365 ft.lb	1500 Nm	1100 ft.lb	1/2"	3/4"	73.8	85.0	425	3.09
MT-2000	1:3	1000 Nm	730 ft.lb	3000 Nm	2200 ft.lb	3/4"	1"	92.2	113.3	501	6.49

Accuracy :  $\pm 6\%$

Unit : mm

Version 02

Apr. 2020



**MATATAKITOYO**  
TORQUE TOOLS  
E-mail: matakitoyo@gmail.com  
www.matakitoyo.com

Manufacturer  
**MATATAKITOYO TOOL CO., LTD.**  
No. 63, Ln. 493, Sec. 3, Zhongshan Rd., Tanzi Dist.,  
Taichung City 42754, Taiwan  
TEL : 886-4-2533 5893

Made in Taiwan