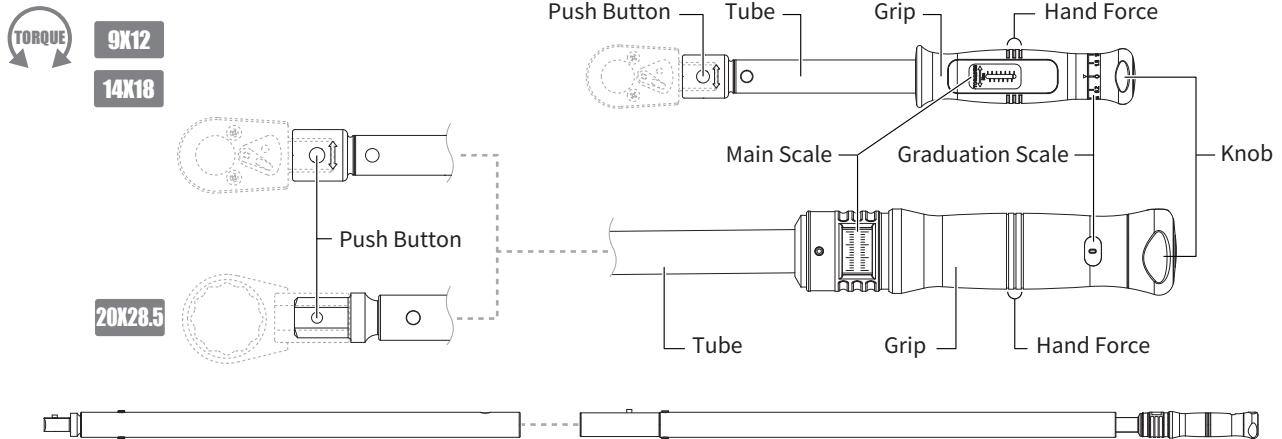


Interchangeable Head Adjustable Torque Handle Window Scale Type OPERATION MANUAL

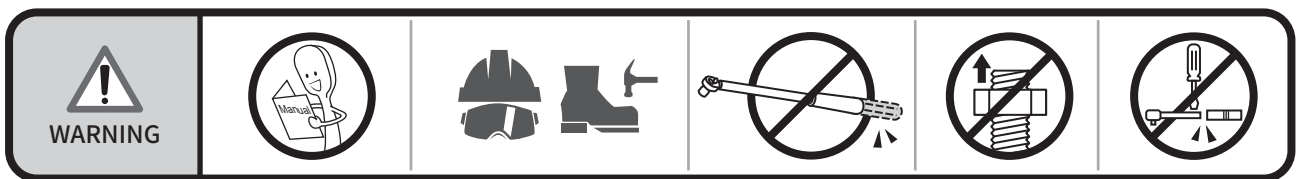
Models covered

MIT2



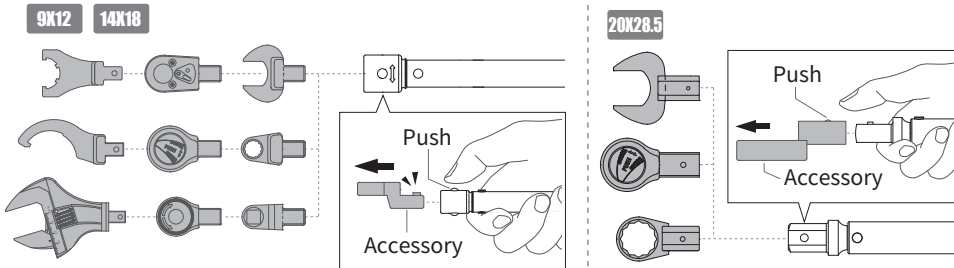
BEFORE STARTING

1. Study this instruction before use.
2. This torque wrench is calibrated and tested before leaving the factory, it is certified to meet the current standard specification and has an accuracy of C.W. $\pm 4\%$ / C.C.W. $\pm 6\%$.
3. **THIS TOOL IS A PRECISION MEASUREMENT AND DESIGNED FOR MANUAL TIGHTENING FASTENERS ONLY. DO NOT USE IT AS A NUT BREAKER OR FOR ANY OTHER PURPOSE.**
4. Do not over torquing the fastener, or it will cause tool's damage and serious injury.
5. Do not use this tool near rotating machinery.
6. Disassemble this tool or make any adjustments will result in the loss of accuracy and invalidating the warranty.
7. Do not continuously apply force after hearing the clicking sound or feel shock.
8. Do not use any kind of extension on the handle of the tool. This will not only damage the tool, also affect the accuracy.
9. Do not immerse grease inside ratchet head. It may cause unexpected damage.
10. Use special care at minimum torque setting.
11. Please wear gloves and goggles when working.

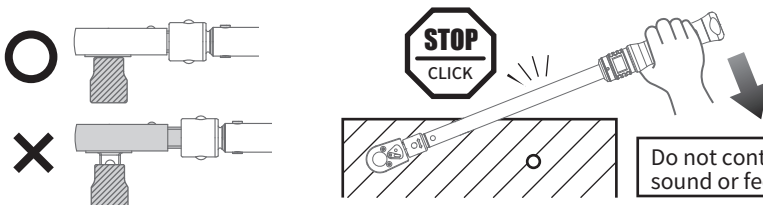


HOW TO USE

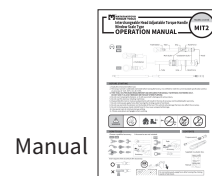
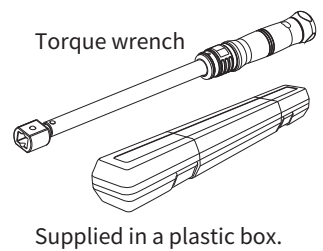
Choose a qualified accessory. ※Accessories are not included.



Insert square drive securely to the accessory.



CONTENTS

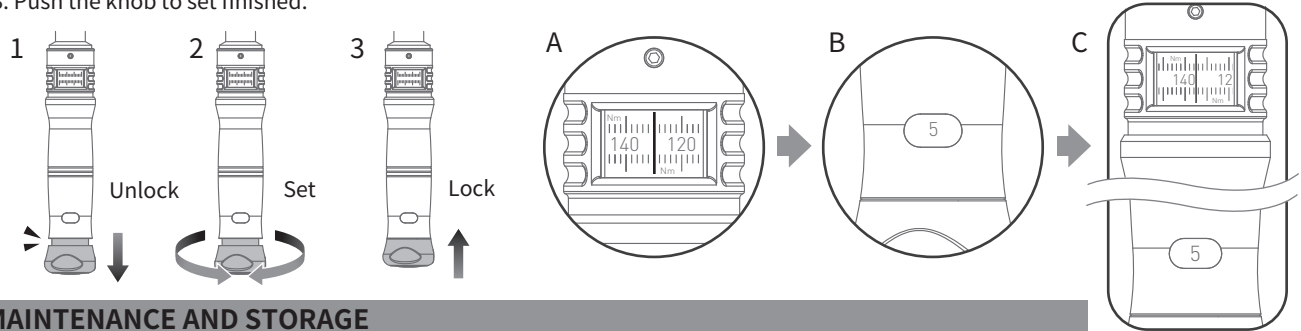


HOW TO SET TORQUE VALUE

1. Pull the knob to unlocked.
2. Turn the knob clockwise or clockwise-clockwise (Right or left) to set the desired torque.
3. Push the knob to set finished.

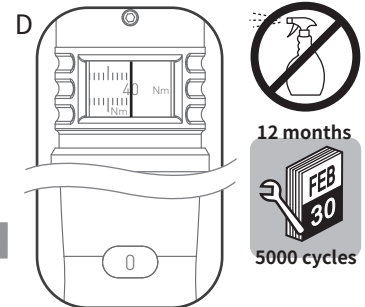
For example : ITEM NO. MIT2-200N

To set torque to 135 Nm. Red line of main scale need to reach 130 Nm (see A) and adjust graduation scale to 5 Nm (see B). Then 130+5=135Nm (see C)



MAINTENANCE AND STORAGE

1. Please return torque value to the lowest reading when not in use.(see D) Do not turn below the lowest reading.
2. If this tool has not been used for a period of time, it shall be preloaded several times at its maximum torque setting. This will allow internal lubricant to recoat.
3. Clean this tool by wiping with a clean cloth after operation and storage in a dry environment. Do not dip any type of liquid in this tool. This may damage the internal of this tool.
4. This tool should be recalibrated a period of 12 months, or 5,000 cycles, whichever occurs first. To contact with local vendor or an authorized repair center for supporting.



TORQUE CONVERSION FACTORS

Units to be converted	Corresponding unit								
	=mN·m	=cN·m	=N·m	=ozf·in	=lbf·in	=lbf·ft	=gf·cm	=kgf·cm (kp·cm)	=kgf·m (kp·m)
1 mN·m	1	0.1	0.001	0.142	0.009	0.0007	10.2	0.01	0.0001
1 cN·m	10	1	0.01	1.416	0.088	0.007	102	0.102	0.001
1 N·m	1000	100	1	141.6	8.851	0.738	10197	10.2	0.102
1 ozf·in	7.062	0.706	0.007	1	0.0625	0.005	72	0.072	0.0007
1 lbf·in	113	11.3	0.113	16	1	0.083	1152.1	1.152	0.0115
1 lbf·ft	1356	135.6	1.356	192	12	1	13826	13.83	0.138
1 gf·cm	0.098	0.01	0.0001	0.014	0.0009	0.00007	1	0.001	0.00001
1 kgf·cm(kp·cm)	98.07	9.807	0.098	13.89	0.868	0.072	1000	1	0.01
1 kgf·m(kp·m)	9807	980.7	9.807	1389	86.8	7.233	100000	100	1

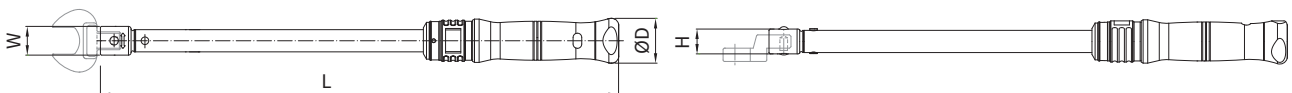
Conversion-formula :

Units to be converted × Factor = Corresponding unit

Example : Convert 5 lbf·ft into cN·m

Solution : 5 × 135.6 = 678 cN·m

SPECIFICATION



Metric

ITEM NO.	Range	Resolution	W	H	L	ØD	KG
MIT2-15N	9x12 3-15 Nm	0.4 Nm	22.1	19.2	191	26.2	0.34
MIT2-30N	9x12 6-30 Nm	0.2 Nm	22.1	19.2	220	26.2	0.58
MIT2-60N	9x12 10-60 Nm	0.5 Nm	22.1	19.2	398	40.0	0.90
MIT2-60NS	14x18 10-60 Nm	0.5 Nm	32.2	25.2	405	40.0	0.90
MIT2-100N	9x12 20-100 Nm	0.5 Nm	22.1	19.2	430	40.0	1.40
MIT2-100NS	14x18 20-100 Nm	0.5 Nm	32.2	25.2	442	40.0	1.41
MIT2-200N	14x18 40-200 Nm	1 Nm	32.0	25.2	484	40.0	2.10
MIT2-320N	14x18 60-320 Nm	2 Nm	32.0	25.2	552	40.0	2.20
MIT2-500N	14x18 100-500 Nm	4 Nm	33.0	30.3	764	40.0	3.50
MIT2-800N	20x28.5 100-800 Nm	5 Nm	28.5	20.1	1071	40.0	5.38
MIT2-1000N	20x28.5 200-1000 Nm	5 Nm	28.5	20.1	1295	40.0	6.00
MIT2-1500N	20x28.5 300-1500 Nm	10 Nm	28.7	20.1	1557	40.0	11.70
MIT2-2000N	20x28.5 400-2000 Nm	10 Nm	28.7	20.1	2160	40.0	12.90

SAE

Accuracy : C.W. ±4% / C.C.W. ±6%

ITEM NO.	Range	Resolution	W	H	L	ØD	KG
MIT2-150i	9x12 30-150 in.lb	2 in.lb	22.1	19.2	191	26.2	0.34
MIT2-250i	9x12 50-250 in.lb	2 in.lb	22.1	19.2	220	26.2	0.58
MIT2-45F	9x12 10-45 ft.lb	0.25 ft.lb	22.1	19.2	398	40.0	0.90
MIT2-45FS	14x18 10-45 ft.lb	0.25 ft.lb	32.2	25.2	405	40.0	0.90
MIT2-75F	9x12 15-75 ft.lb	0.5 ft.lb	22.1	19.2	430	40.0	1.40
MIT2-75FS	14x18 15-75 ft.lb	0.5 ft.lb	32.2	25.2	442	40.0	1.41
MIT2-150F	14x18 30-150 ft.lb	0.5 ft.lb	32.0	25.2	484	40.0	2.10
MIT2-230F	14x18 50-230 ft.lb	1 ft.lb	32.0	25.2	552	40.0	2.20
MIT2-300F	14x18 50-300 ft.lb	2.5 ft.lb	33.0	30.3	764	40.0	3.50
MIT2-600F	20x28.5 100-600 ft.lb	2.5 ft.lb	28.5	20.1	1071	40.0	5.38
MIT2-700F	20x28.5 100-700 ft.lb	2.5 ft.lb	28.5	20.1	1295	40.0	6.00
MIT2-1000F	20x28.5 200-1000 ft.lb	5 ft.lb	28.7	20.1	1557	40.0	11.70
MIT2-1500F	20x28.5 300-1500 ft.lb	5 ft.lb	28.7	20.1	2160	40.0	12.90

Unit : mm

Version 03

Jun. 2023



MATATAKITOYO
TORQUE TOOLS
E-mail: matatakitoyo@gmail.com
www.matatakitoyo.com

Manufacturer

MATATAKITOYO TOOL CO., LTD.

No. 63, Ln. 493, Sec. 3, Zhongshan Rd., Tanzi Dist.,
Taichung City 42754, Taiwan
TEL : 886-4-2533 5893

Made in Taiwan