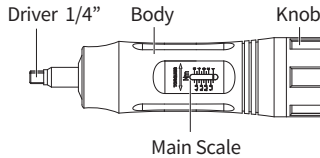
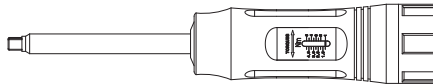


Adjustable Torque Screwdriver OPERATION MANUAL

MTD



MTD-1405N / MTD-1450I
MTD-1408N / MTD-1480I



MTD-1405NL / MTD-1450IL
MTD-1408NL / MTD-1480IL

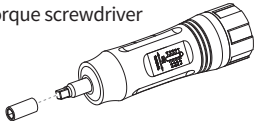
BEFORE STARTING

1. Study this instruction before use.
2. This torque wrench is calibrated and tested before leaving the factory, it is certified to meet the current standard specification and has an accuracy of C.W. $\pm 6\%$.
3. **THIS TOOL IS A PRECISION MEASUREMENT AND DESIGNED FOR MANUAL TIGHTENING FASTENERS ONLY. DO NOT USE IT AS A NUT BREAKER OR FOR ANY OTHER PURPOSE.**
4. Do not over torquing the fastener, or it will cause tool's damage and serious injury.
5. Do not use this tool near rotating machinery.
6. Disassemble this tool or make any adjustments will result in the loss of accuracy and invalidating the warranty.
7. Do not continuously apply force after hearing the clicking sound or feel shock.
8. Do not use any kind of extension on the handle of the tool. This will not only damage the tool, also affect the accuracy.
9. Use special care at minimum torque setting.
10. Please wear gloves and goggles when working.

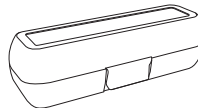


CONTENTS

Torque screwdriver



Socket



Supplied in a plastic box.

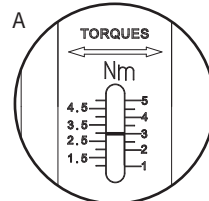
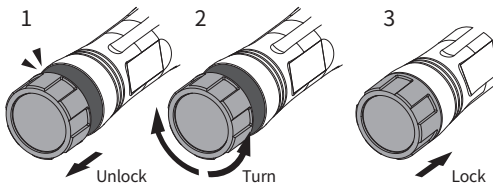


Manual

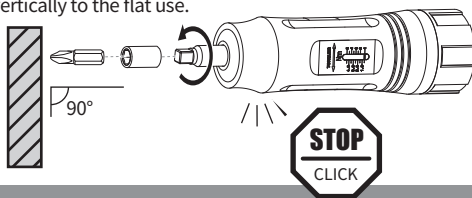
HOW TO SET TORQUE VALUE

Pull to unlock and turn it to set the target torque.
Then push it back to lock.

For example, ITEM NO. MTD-1405N target torque is 3 Nm.
Red line of main scale reach 3 Nm (see A), so as to acquire 3 Nm.

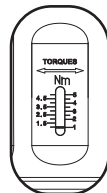


1. When applying torque the screwdriver must be kept vertically to the flat use.
2. Inaccurate torque readings may occur from applying side load.



MAINTENANCE AND STORAGE

1. Please return torque value to the lowest reading when not in use. (see C) Do not turn below the lowest reading.
2. If this tool has not been used for a period of time, it shall be preloaded several times at its maximum torque setting. This will allow internal lubricant to recoat.
3. Clean this tool by wiping with a clean cloth after operation and storage in a dry environment. Do not dip any type of liquid in this tool. This may damage the internal of this tool.
4. This tool should be recalibrated a period of 12 months, or 5,000 cycles, whichever occurs first. To contact with local vendor or an authorized repair center for supporting.



CONVERSION TABLE

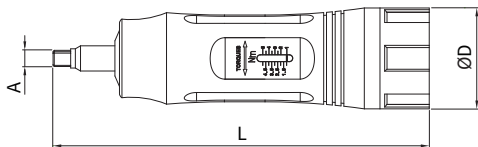
Units to be converted	Corresponding unit								
	=mN·m	=cN·m	=N·m	=ozf·in	=lbf·in	=lbf·ft	=gf·cm	=kgf·cm (kp·cm)	=kgf·m (kp·m)
1 mN·m	1	0.1	0.001	0.142	0.009	0.0007	10.2	0.01	0.0001
1 cN·m	10	1	0.01	1.416	0.088	0.007	102	0.102	0.001
1 N·m	1000	100	1	141.6	8.851	0.738	10197	10.2	0.102
1 ozf·in	7.062	0.706	0.007	1	0.0625	0.005	72	0.072	0.0007
1 lbf·in	113	11.3	0.113	16	1	0.083	1152.1	1.152	0.0115
1 lbf·ft	1356	135.6	1.356	192	12	1	13826	13.83	0.138
1 gf·cm	0.098	0.01	0.0001	0.014	0.0009	0.00007	1	0.001	0.00001
1 kgf·cm(kp·cm)	98.07	9.807	0.098	13.89	0.868	0.072	1000	1	0.01
1 kgf·m(kp·m)	9807	980.7	9.807	1389	86.8	7.233	100000	100	1

Conversion-formula : Units to be converted × Factor=Corresponding unit

Example : Convert 5 lbf·ft into cN·m

Solution : $5 \times 135.6 = 678 \text{ cN·m}$

SPECIFICATION



Metric

ITEM NO.	Ø A	Range	Accuracy	L	ØD	Weight
MTD-1405N	1/4"	1-5 Nm	0.5 Nm	154	42.5	370
MTD-1405NL	1/4"	1-5 Nm	0.5 Nm	235	42.5	430
MTD-1408N	1/4"	1-8 Nm	0.5 Nm	154	42.5	370
MTD-1408NL	1/4"	1-8 Nm	0.5 Nm	235	42.5	430

SAE

Accuracy : C.W. ±6%

ITEM NO.	Ø A	Range	Accuracy	L	ØD	Weight
MTD-1450I	1/4"	10-50 in.lb	5 in.lb	154	42.5	370
MTD-1450IL	1/4"	10-50 in.lb	5 in.lb	235	42.5	430
MTD-1480I	1/4"	10-80 in.lb	5 in.lb	154	42.5	370
MTD-1480IL	1/4"	10-80 in.lb	5 in.lb	235	42.5	430

Unit : mm



MATATAKITOYO
TORQUE TOOLS

E-mail: matatakitoyo@gmail.com
www.matatakitoyo.com

Manufacturer

MATATAKITOYO TOOL CO., LTD.

No. 63, Ln. 493, Sec. 3, Zhongshan Rd., Tanzi Dist.,
Taichung City 42754, Taiwan
TEL : 886-4-2533 5893

Version 03

Jun. 2023

Made in Taiwan