

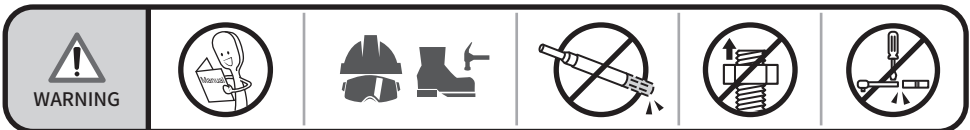
Torque Screwdriver, Pre-Set Type OPERATION MANUAL

FTD



BEFORE STARTING

1. Study this instruction before use.
2. This torque wrench is calibrated and tested before leaving the factory, it is certified to meet the current standard specification and has an accuracy of $\pm 6\%$.
3. **THIS TOOL IS A PRECISION MEASUREMENT AND DESIGNED FOR MANUAL TIGHTENING FASTENERS ONLY. DO NOT USE IT AS A NUT BREAKER OR FOR ANY OTHER PURPOSE.**
4. Do not over torquing the fastener, or it will cause tool's damage and serious injury.
5. Do not use this tool near rotating machinery.
6. Disassemble this tool or make any adjustments will result in the loss of accuracy and invalidating the warranty.
7. Do not continuously apply force after hearing the clicking sound or feel shock.
8. Do not use any kind of extension on the handle of the tool. This will not only damage the tool, also affect the accuracy.
9. Use special care at minimum torque setting.
10. Please wear gloves and goggles when working.

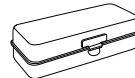


BEFORE OPERATING

1. Before using the torque screwdriver, it is necessary to activate the inner spring to ensure accuracy.
2. To activate the inner spring, place the bit securely in a bench vise and turn torque screwdriver clockwise until it clicks.
3. Continue turning clockwise until 20 clicks have been reached. Ignoring this step can result in improper torque and cause possible damage.

CONTENTS

Torque Screwdriver



Supplied in
a metal box.



Manual

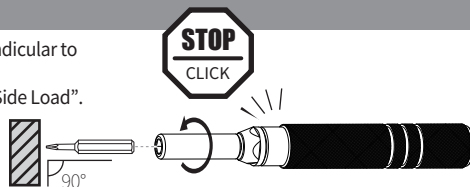
TO USE

1. Once the inner spring has been activated, simply turn the torque screwdriver clockwise until it clicks.
2. The torque screwdriver is precisely calibrated to provide accurate torque every time when used properly.



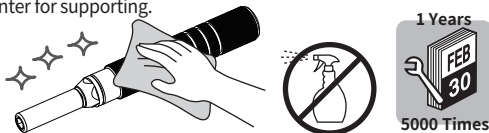
SIDE LOADING NOTE

1. When applying torque the screwdriver must be kept perpendicular to the plane of use (either horizontal or vertical).
2. Inaccuracies in torque readings may occur from applying "Side Load".



MAINTENANCE AND STORAGE

1. If this tool has not been used for a period of time, it shall be preloaded several times to allow internal lubricant to recoat.
2. Clean this tool by wiping with a clean cloth after operation and storage in a dry environment.
Do not dip any type of liquid in this tool. This may damage the internal of this tool.
3. This tool should be recalibrated a period of 12 months, or 5,000 cycles, whichever occurs first.
To contact with local vendor or an authorized repair center for supporting.



CONVERSION TABLE

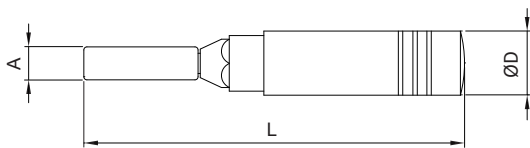
Units to be converted	Corresponding unit								
	=mN-m	=cN-m	=N-m	=ozf-in	=lbf-in	=lbf-ft	=gf-cm	=kgf-cm (kp-cm)	=kgf-m (kp-m)
1 mN-m	1	0.1	0.001	0.142	0.009	0.0007	10.2	0.01	0.0001
1 cN-m	10	1	0.01	1.416	0.088	0.007	102	0.102	0.001
1 N-m	1000	100	1	141.6	8.851	0.738	10197	10.2	0.102
1 ozf-in	7.062	0.706	0.007	1	0.0625	0.005	72	0.072	0.0007
1 lbf-in	113	11.3	0.113	16	1	0.083	1152.1	1.152	0.0115
1 lbf-ft	1356	135.6	1.356	192	12	1	13826	13.83	0.138
1 gf-cm	0.098	0.01	0.0001	0.014	0.0009	0.00007	1	0.001	0.00001
1 kgf-cm(kp-cm)	98.07	9.807	0.098	13.89	0.868	0.072	1000	1	0.01
1 kgf-m(kp-m)	9807	980.7	9.807	1389	86.8	7.233	100000	100	1

Conversion-formula : Units to be converted × Factor = Corresponding unit

Example : Convert 5 lbf-ft into cN-m

Solution : 5 × 135.6 = 678 cN-m

SPECIFICATION



Accuracy : ± 6%

Metric

ITEM NO.	⊙	Range	A	L	ØD	KG
FTD-1N	4	0.1-0.5 Nm	7.4	99.3	13.8	0.032

SAE

ITEM NO.	⊙	Range	A	L	ØD	KG
FTD-10I	4	1-10 in.lb	7.4	99.3	13.8	0.032

Unit : mm



MATATAKITOYO
TORQUE TOOLS

E-mail: matatakitoyo@gmail.com
www.matatakitoyo.com

Manufacturer

MATATAKITOYO TOOL CO., LTD.

No. 63, Ln. 493, Sec. 3, Zhongshan Rd., Tanzi Dist.,
Taichung City 42754, Taiwan
TEL : 886-4-2533 5893

Version 03

Feb. 2023

Made in Taiwan