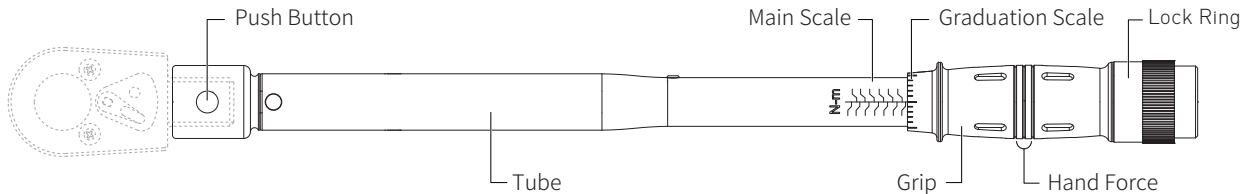


Interchangeable Head Adjustable Torque Handle OPERATION MANUAL

Models covered

ATP

TORQUE 9X12 14X18



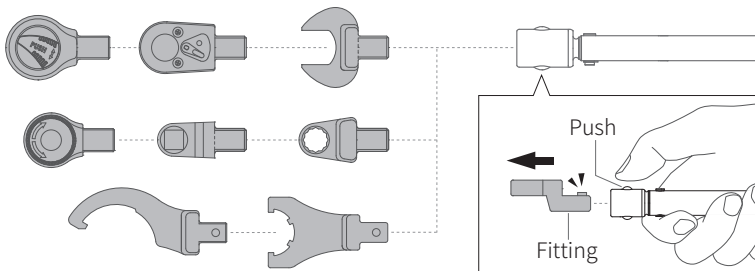
BEFORE STARTING

1. Study this instruction before use.
2. This torque wrench as calibrated and tested before leaving the factory is certified to meet the current standard specification and has an accuracy of $\pm 4\%$.
3. **THIS TOOL IS A PRECISION MEASUREMENT AND DESIGNED FOR MANUAL TIGHTENING FASTENERS ONLY. DO NOT USE IT AS A NUT BREAKER OR FOR ANY OTHER PURPOSE.**
4. Over torque will cause tool damage and personal injury.
5. Do not use this tool near rotating machinery.
6. Disassemble this tool or make any adjustments will result of losing accuracy and void the warranty.
7. Do not continuously apply force after hear click or feel shock.
8. Do not use any format of extension on the handle of the tool. This will not only damage the tool, also affect the accuracy.
9. Do not immerse grease inside ratchet head. It may cause unexpected damage.
10. Use special care at minimum torque setting.
11. Please wear gloves and goggles when working.

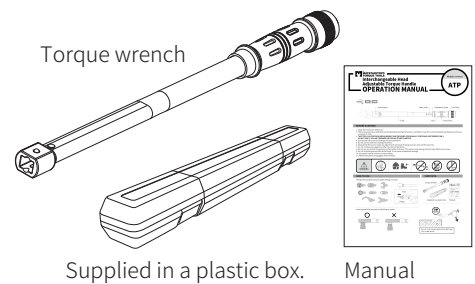


HOW TO USE

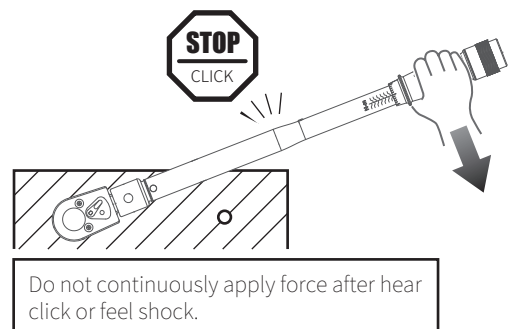
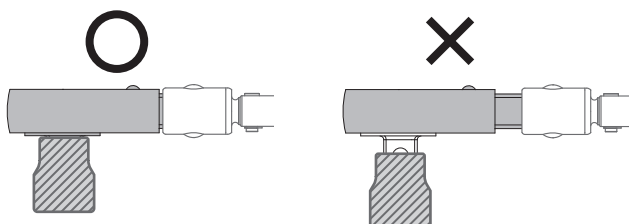
Fitting (Not included) Choose quality Fitting or socket.



CONTENTS



Insert square drive securely to the fitting or socket.

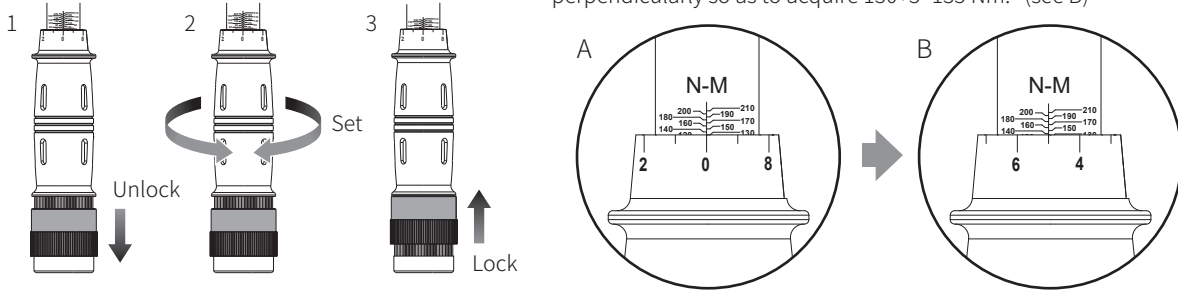


BHOW TO SET TORQUE VALUE

1. Push down the lock ring to unlocked.
2. Turn the adjustable handle Clockwise or Anti-clockwise (Right or left) to set the desired torque.
3. Pull upper the lock ring to set finished.

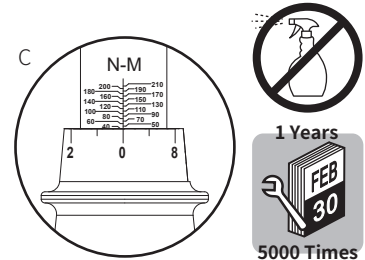
For example : ITEM NO. ATP-210N

To set torque to 135 Nm. Firstly push down and hold the lock ring and turn the handle clockwise until the upper edge to 130 Nm (see A) and the reading "5" on the long tube must align with the center link of scale perpendicularly so as to acquire $130+5=135$ Nm. (see B)



MAINTENANCE AND STORAGE

1. Please return torque value to just below lowest reading when not in use. Do not turn below lowest reading. (see C)
2. If this tool has not been used for a period of time, it shall be preloaded several times at its maximum torque setting. This will allow internal lubricant to recoat.
3. Clean this tool by wiping with a clean cloth after operation and storage in a dry environment. Do not dip any type of liquid in this tool. This may damage the internal of this tool.
4. This tool should be recalibrated a period of 12 months, or 5,000 cycles, whichever occurs first. To contact with local vendor, an authorized repair center for supporting.

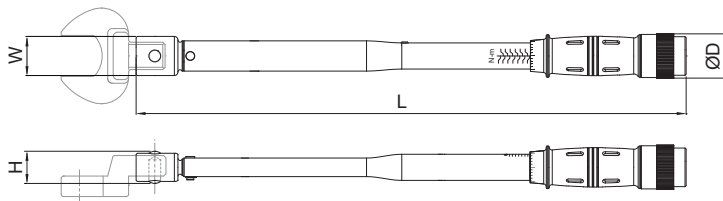


TORQUE CONVERSION FACTORS

| Units to be converted | Corresponding unit | | | | | | | | |
|-----------------------|--------------------|-------|--------|---------|---------|---------|--------|-----------------|---------------|
| | =mN-m | =cN-m | =N-m | =ozf-in | =lbf-in | =lbf-ft | =gf-cm | =kgf-cm (kp-cm) | =kgf-m (kp-m) |
| 1 mN-m | 1 | 0.1 | 0.001 | 0.142 | 0.009 | 0.0007 | 10.2 | 0.01 | 0.0001 |
| 1 cN-m | 10 | 1 | 0.01 | 1.416 | 0.088 | 0.007 | 102 | 0.102 | 0.001 |
| 1 N-m | 1000 | 100 | 1 | 141.6 | 8.851 | 0.738 | 10197 | 10.2 | 0.102 |
| 1 ozf-in | 7.062 | 0.706 | 0.007 | 1 | 0.0625 | 0.005 | 72 | 0.072 | 0.0007 |
| 1 lbf-in | 113 | 11.3 | 0.113 | 16 | 1 | 0.083 | 1152.1 | 1.152 | 0.0115 |
| 1 lbf-ft | 1356 | 135.6 | 1.356 | 192 | 12 | 1 | 13826 | 13.83 | 0.138 |
| 1 gf-cm | 0.098 | 0.01 | 0.0001 | 0.014 | 0.0009 | 0.00007 | 1 | 0.001 | 0.00001 |
| 1 kgf-cm(kp-cm) | 98.07 | 9.807 | 0.098 | 13.89 | 0.868 | 0.072 | 1000 | 1 | 0.01 |
| 1 kgf-m(kp-m) | 9807 | 980.7 | 0.9807 | 1389 | 86.8 | 0.7233 | 10000 | 100 | 1 |

Conversion-formula :
 Units to be converted × Factor = Corresponding unit
 Example : Convert 5 lbf-ft into cN-m
 Solution : $5 \times 135.6 = 678$ cN-m

SPECIFICATION



Accuracy : ± 4% Unit : mm

Metric

| ITEM NO. | Range | Resolution | W | H | L | ØD | KG |
|-----------|-----------------|------------|------|------|-----|------|------|
| ATP-30N | 9x12 6-30 Nm | 0.2 Nm | 24.3 | 17.2 | 280 | 39.1 | 0.75 |
| ATP-80N | 9x12 10-80 Nm | 0.5 Nm | 24.0 | 19.0 | 355 | 35.0 | 0.88 |
| ATP-80NS | 14x18 10-80 Nm | 0.5 Nm | 32.0 | 25.1 | 365 | 35.0 | 0.90 |
| ATP-110N | 9x12 20-110 Nm | 0.5 Nm | 24.0 | 19.0 | 355 | 35.0 | 0.94 |
| ATP-110NS | 14x18 20-110 Nm | 0.5 Nm | 32.0 | 22.0 | 370 | 39.1 | 0.96 |
| ATP-210N | 14x18 40-210 Nm | 1 Nm | 32.0 | 24.7 | 505 | 39.1 | 1.50 |

SAE

| ITEM NO. | Range | Resolution | W | H | L | ØD | KG |
|----------|--------------------|------------|------|------|-----|------|------|
| ATP-250i | 9x12 40-250 in.lb | 1 in.lb | 24.3 | 17.2 | 280 | 39.1 | 0.75 |
| ATP-60F | 9x12 10-60 ft.lb | 0.5 ft.lb | 24.0 | 19.0 | 355 | 35.0 | 0.88 |
| ATP-60FS | 14x18 10-60 ft.lb | 0.5 ft.lb | 32.0 | 25.1 | 365 | 35.0 | 0.90 |
| ATP-80F | 9x12 15-80 ft.lb | 0.5 ft.lb | 24.0 | 19.0 | 355 | 35.0 | 0.94 |
| ATP-80FS | 14x18 15-80 ft.lb | 0.5 ft.lb | 32.0 | 22.0 | 370 | 39.1 | 0.96 |
| ATP-150F | 14x18 30-150 ft.lb | 1 ft.lb | 32.0 | 24.7 | 505 | 39.1 | 1.50 |

Edition 01

Apr. 2020



MATATAKITOYO
TORQUE TOOLS
 E-mail: matatakitoyo@gmail.com
 www.matatakitoyo.com

Manufacturer
MATATAKITOYO TOOL CO., LTD.
 No. 63, Ln. 493, Sec. 3, Zhongshan Rd., Tanzi Dist.,
 Taichung City 42754, Taiwan
 TEL : 886-4-2533 5893

Made in Taiwan